

Aermec NLW550

Specifications

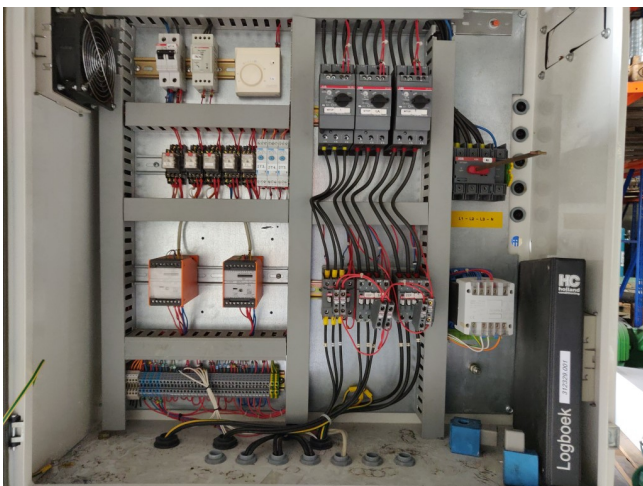
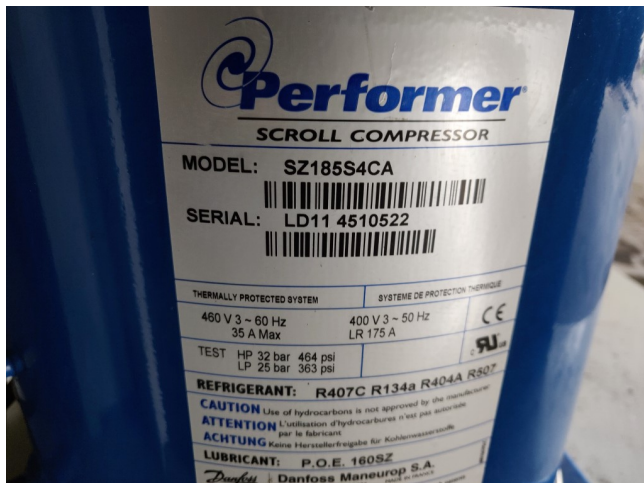
Brand	Aermec
Tipo	NLW550
Product type	Water Cooled Chiller
Capacidad kW	117
Refrigerante	Freon
Tipo de Refrigerante	R407C
Peso kg.	660
Sizes	1520x800x1750 mm (LxWxH)
Remarks	Water to water chiller and heat pump with scroll compressors
Stock	1



Description

Used Aermec NLW550

Compressors: 1* Performer SZ185S4CA scroll compressor 1* Performer SZ161T4VC scroll compressor 1* Performer SZ120, Refrigerant: R 407 A Brand: Aermec Model: NLW550 **All components of this used chiller will be tested on good working, leak free condition (compressor, control panel, etcetera). Choosing HOSBV means buying with warranty. We perform an industrial cleaning and rust spots will be covered. Also, we can arrange your shipment.



		POMPA DI CALORE • HEAT PUMP R407C									
		0500	0550	0600	0650	0700	0750	0800	0900	1000	
RAFFREDDAMENTO • COOLING											
• Potenza frigorifera • Cooling capacity	(kW)	107.0	119.0	142.0	161.0	184.0	210.0	231.0	279.0	307.0	
• Potenza assoluta totale • Total input power	(kW)	26.20	28.50	34.50	39.30	45.30	51.00	56.10	68.00	75.30	
• E.E.R.		4.08	4.11	4.12	4.11	4.07	4.07	4.04	4.06	4.07	
• Portata acqua condensante • Water flow rate condenser	(l/s)	18400	20100	24400	27900	31600	35700	41100	47900	52900	
• Portata acqua condensante • Water flow rate condenser	(l/s)	22910	25026	30338	34434	39422	44715	50853	59822	65790	
• Pressione di carico evaporatore	(kPa)	29.00	34.00	37.50	40.00	39.00	33.50	32.50	36.00	32.30	
• Pressione di carico condensatore	(kPa)	46.00	54.50	60.00	65.00	63.50	56.00	55.00	60.00	54.00	
RISCALDAMENTO • HEATING											
• Potenza termica • Heating capacity	(kW)	113.0	126.0	151.0	174.0	198.0	218.0	276.0	308.0	340.0	
• Potenza assoluta totale • Total input power	(kW)	31.40	35.00	40.00	45.00	50.70	56.70	67.00	75.30	83.30	
• C.O.P.		3.25	3.27	3.27	3.26	3.26	3.33	3.39	3.41	3.43	
• Portata acqua condensante • Water flow condenser	(l/s)	19100	21600	26100	29900	34000	40400	47400	55000	60400	
• Portata di carico condensatore • Condens. pressure drops	(kPa)	34.00	41.00	44.50	48.30	46.00	41.00	42.00	46.00	42.30	
• Pressione di carico evaporatore • Evapor. pressure drops	(kPa)	18.00	19.00	21.00	23.00	21.00	20.00	18.00	21.00	18.00	
Consumo H2O evap. 10°C • Consumo H2O evap. 10°C	(l/s)	13000	15000	18200	20800	23600	26700	31400	37400	41400	
DATI TECNICI GENERALI • MAIN TECHNICAL DATA											
Compressori • Compressors	(n°)	10/08	10/08	10/08	10/08	10/08	10/08	10/08	10/08	10/08	
Numero di componenti • Circuit	(n°)	3 / 2	3 / 2	4 / 2	4 / 2	4 / 2	4 / 2	4 / 2	4 / 2	4 / 2	
Rendimento carter compressori											
Condensatore • Heat exchanger	(n° x [m])	3 x 7.5	3 x 7.5	4 x 7.5	4 x 7.5	4 x 7.5	2 x 7.5	4 x 130	4 x 130	4 x 130	
Pressione sonora (versione base) • Sound power (standard)	(dB(A))	83	83	84	85	85	86	88	88	88	
Pressione sonora (versione base) • Sound pressure (standard)	(dB(A))	55	55	56	57	57	58	60	60	60	
Pressione sonora (versione abbassata) • Sound power (low noise)	(dB(A))	77	77	78	79	79	80	82	82	82	
Pressione sonora (versione abbassata) • Sound pressure (low noise)	(dB(A))	49	49	50	51	51	52	54	54	54	

